

A grayscale photograph of several students sitting at a long table in a classroom, focused on writing or reading. The students are of various ethnicities and are all looking down at their papers. The background shows a classroom setting with some decorations on the wall. The image is overlaid with a semi-transparent purple rectangle containing the title text.

Overview of NM State Assessment Program

Assessment-Specific Manuals

PLEASE NOTE: This training does NOT take the place of reading and understanding all appropriate manuals and other test administration materials. The following are available on vendor websites:

- **Test Coordinator Manual (TCM)**
- **Test Administration Manual/ Directions for Administration (TAM/DFA)**
- **Accommodations (also see PED manual)**

Assessment Bureau

Gabriel Martinez

- Testing Policies and Procedures
 - ACCESS for ELLs
- gabriel.martinez3@state.nm.us
505-827-6509

Melissa Hernandez

- PARCC
 - Testing Irregularities
 - Graduation Testing Requirements
 - SBA and PARCC Spanish translations
- melissa.hernandez@state.nm.us
505-827-6528

Kimber Sanchez

- SBA Science
 - NMAPA
 - Testing Accommodations
 - Computer-based Testing
- kimber.sanchez@state.nm.us
505-827-6612

Bilingual Multicultural Education

Kirsi Laine

kirsi.laine@state.nm.us

505-827-6505

End-of-Course Exams

Mark Curran

mark.curran@state.nm.us

505-827-6651

Adam Rios

adam.rios@state.nm.us

956-206-6727

Candace Green

candace.green@state.nm.us

505-827-4644

Lynn Vasquez

lynn.vasquez@state.nm.us

505-803-1802

Spring 2018 Assessment Calendar

PARCC	April 16 – May 11
SBA	Science: March 5 – March 30 Spanish Reading: April 16 – May 4 (PBT only)
NMAPA	March 12 – April 6
ACCESS	January 22 – March 16
NAEP	January 29 – March 9 (sampled schools only)
EoC	Senior Retests: Can be administered as needed General Spring Window: Last 3 weeks of the semester
Istation	MOY: January 1 – 31; EOY: May 1 – May 31

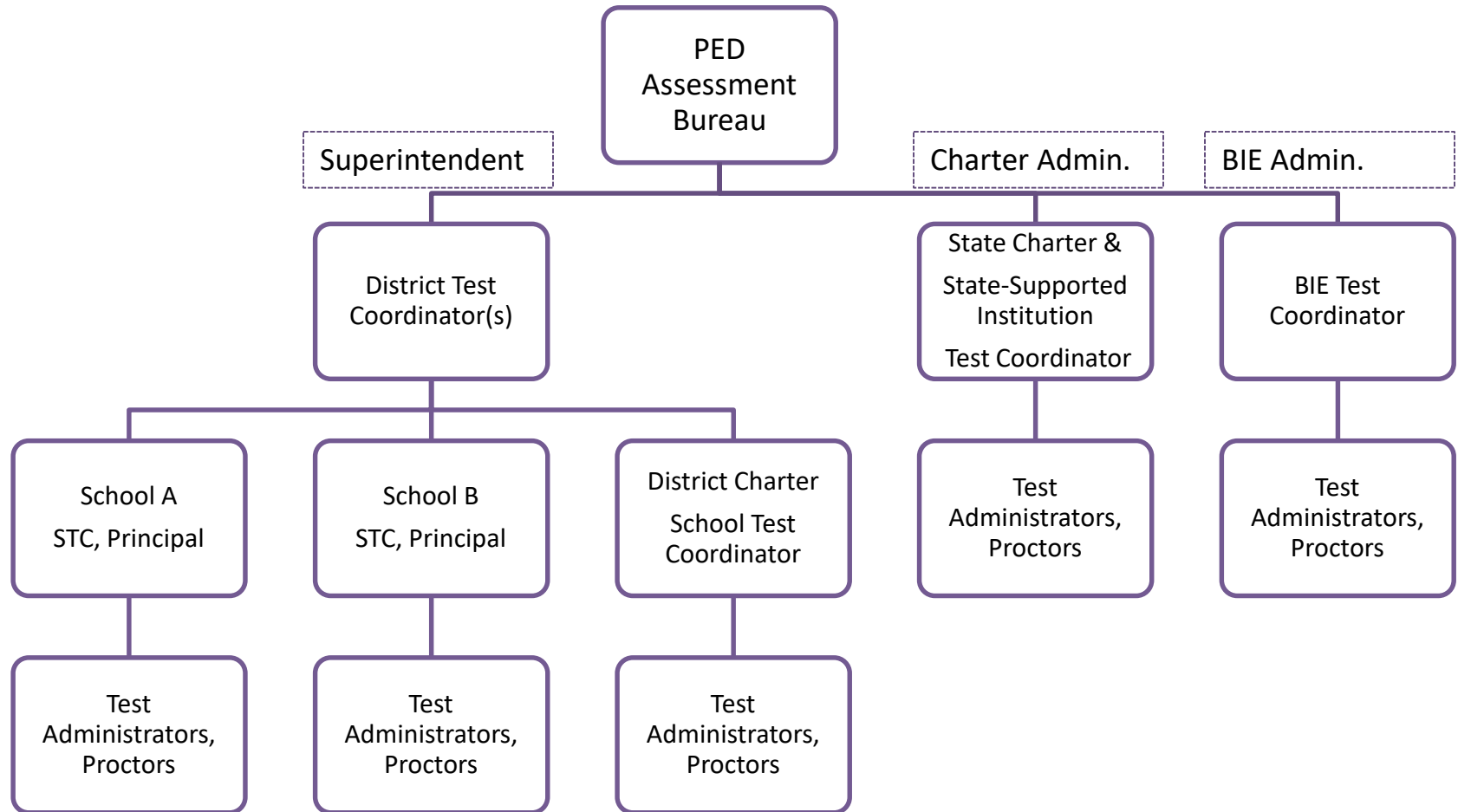
Participation in State Assessments

- **Federal and State Law require all students to participate**
 - **Federal: ESEA; HR1, Title1, Part A, Subpart 1, Section 1111, (b), 3, C**
<https://www2.ed.gov/policy/elsec/leg/esea02/pg2.html#sec1111>
 - **State: Section 22-2C-4 NMSA 1978**
<https://www.nmlegis.gov/Sessions/15%20Regular/bills/house/HB0015.pdf>
- **One exception: A student with a rare and unique condition that prevents him/her from receiving instruction may receive a medical exemption with PED approval.**
<http://webnew.ped.state.nm.us/bureaus/assessment/district-test-coordinator/>

Test Mode

- **All districts and charter schools are expected to test online for PARCC, SBA Science, and ACCESS**
- **PED monitors paper orders and revokes orders not supported by a CBT waiver.**

Assessment Roles and Training Model



Superintendents, BIE Administrators, & State Charter Administrators

- **Designate District Test Coordinator**
- **Verify that procedures are followed correctly**
- **Sign Superintendent Verification form and send to PED twice per year**

Principals (including District Charters)

- **Attend local trainings by DTC**
- **Verify that procedures are followed correctly**
- **Sign Principal Verification form and maintain at school/district for five years**

Test Coordinator Requirements

- **District Test Coordinators/Charter STCs must**
 - 1. Hold a valid PED license**
 - **School Instructor**
 - **Administrator**
 - 2. Be designated by the Superintendent or School Administrator (Charter/BIE)**
 - 3. Be officially registered with PED using the DTC-STC Contact Form**

DTC Leadership Responsibilities

- **Receives PED training twice a year**
- **Must be completely knowledgeable of 6.10.7 NMAC**
<http://webnew.ped.state.nm.us/bureaus/assessment/district-test-coordinator/>
- **Communicates assessment information to district, schools, parents, and community**
- **Develops District Test Security Policy or Checklist**

DTC Leadership Responsibilities

- **Responsible for test material orders, inventory, and security**
- **Ensures standardized test administration**
- **Primary liaison with PED and testing vendors**

DTC Training Responsibilities

Provides training to STCs and principals prior to fall and spring administrations.

- Disseminates [6.10.7 NMAC](#) to all staff
- Provides clear instructions on what actions are not allowed—see 6.10.7.9.C.(5)
- Provides manuals in advance of training and reviews manuals during training

DTC Training Responsibilities

- **Assists STCs with training school staff**
- **Provides and reviews testing schedules**
- **Communicates need for locally-provided test materials (calculators, scratch paper) to school staff**
- **Develops local secure tracking procedures**

DTC Test Administration Responsibilities

- **Inspects schools' accommodations documents**
- **Ensures TAs and Proctors are certified, trained, and have signed Confidentiality Agreements**
- **Inspects schools to ensure secure storage of assessment materials and tracking procedures are followed**
- **Reports irregularities to PED and conducts investigations**

DTC Post-Test Responsibilities

Works with STCs to ensure

- **all students were tested**
- **all student data are complete and accurate**
- **all secure materials returned to vendors according to directions**

STC Responsibilities

- Provides training to TAs and Proctors twice a year
- Reviews [6.10.7 NMAC](#) with TAs and Proctors
- Disseminates materials and trains TAs and Proctors
- Provides manuals to TAs in advance of training

STC Pre-Testing Responsibilities

- **Trains TAs on local secure tracking procedures**
- **Provides student and room testing assignments**
- **Ensures proper administration of accommodations (Section 504 Plans, IEPs, ELL Plans)**
- **Provides TAs clear instructions on what is/is not allowed**

STC Test Administration Responsibilities

- **Posts “Testing, do not disturb” signs**
- **Actively monitors for proper and standardized administration and appropriate use of accommodations (visiting classrooms during test sessions)**
- **Distributes allowable support materials/tools to TAs (calculators, scratch paper, No. 2 pencils, etc.)**

STC Test Administration Responsibilities

- **Securely stores assessment materials (including student testing tickets) following DTC's tracking procedures**
- **Reports irregularities to DTC and supports DTC's investigation of irregularities, as appropriate**

STC Post-Test Responsibilities

- Ensures all students were tested
- Verifies student data in the online administrator portal (CBT) or on students' PBT materials
- Returns all secure materials to DTC
- Securely destroys all scratch paper and recycles manuals

Test Administrator Requirements

- **Test Administrators (TAs) must hold a valid PED license**
 - **School Instructor**
 - **Administrator**
- **Long-term substitutes holding a current PED license may serve as TAs.**
- **Short-term substitutes, educational assistants (EAs), school nurses, and coaches may not serve as TAs, unless they also have an instructor license.**

Test Administrator Responsibilities

- Administers assessments to assigned students according to TAM/DFA
- Reads scripts to students as written
- Provides accommodations as directed
- Strictly monitors students during testing
- Maintains security of assessment materials
- Reports irregularities immediately to STC and principal
- Sign [Confidentiality Agreement](#)

Proctors

- Assist TAs but don't act as Test Administrator
- Trained by STC in proper test administration and test security
- Must sign [Confidentiality Agreement](#)
- Hall monitor/restroom escort
- No parents in child's or relative's room
- Proctors generally EAs/IAs but can be any trained staff or community member

General Scheduling

- **Test within PED-designated window.**
 - **Test on any school day, Monday to Friday.**
 - **Test in mornings, afternoons, or both.**
 - **Reserve time for makeups.**
- **Ideally 2 units/sessions per day with the maximum of 3 units/sessions per day; no breaks during a session**
- **Schools may schedule units/sessions back to back with a short break between units.**

CBT Scheduling

- **Schools may create their own schedules**
 - **Within content areas, units must be administered in sequential order (Unit 1 > Unit 2 > Unit 3, except for make-up testing).**
 - **PARCC: No specific order for content areas – may administer ELA or Mathematics first**
 - **Students may alternate between content areas (Unit 1 ELA > Unit 1 Math > Unit 2 ELA > Unit 2 Math...).**
- **Schedule each unit/session within a grade/course as close together as possible.**

PBT Scheduling

- **Test sessions must follow order in the test booklet. (Make-ups may have exceptions.)**
- **All schools in district must follow same schedule.**
- **No testing on materials-packaging day.**
- **All materials must be returned on/by designated shipping day.**

PBT Allowance

A student may test PBT without a waiver if he or she

- **Has a disability that requires this accommodation**
- **Is a transfer to the school within 3 months prior to testing and lacks adequate computer skills**



Questions
you have?

A grayscale photograph of several students sitting at a long table in a classroom, focused on writing in their notebooks. The students are of various ethnicities and are all looking down at their work. In the background, there are some star-shaped decorations on the wall. The image is slightly blurred, giving it a candid feel.

Test Security

6.10.7 NMAC

<http://164.64.110.239/nmac/parts/title06/06.010.0007.htm>

- Title 6 Primary and Secondary Education. Chapter 10 Public School Administration - Procedural Requirements
- State Rules for Test Security and Test Administration

Test Security

- Protects the student.
- Protects the staff.
- Protects the test.
- Protects you.



Why is Security Important?

- So that student responses are a true representation of what students know and can do
- So that assessment data used for accountability are valid and accurate
- So that test items can be used across years to allow for comparability
- So that investments of resources, time, and energy are protected

Standardized Administration

- Provide students no unfair advantages or disadvantages for students.
- Read and understand all manuals, directions, and scripts.
- Maintain strict adherence, with no deviation, to every element of directions/instructions.

What is a Testing Irregularity?

Any incident that results in a deviation from documented test administration procedures

Categories:

- **Impactful**-testing irregularities result in student answers that do not accurately reflect what a student knows and can do. These tests are almost always invalidated.
- **Non-impactful**-testing irregularities do not result in invalidated tests.

Examples of Test Irregularities

- Cell phones or other nonallowable electronic devices
- Student is sick and needs to leave during the test
- Starting a test without accommodations in place
- Students move past the current session (PBT)
- TAs deviate from administration directions or script

What are the Best Ways to Prevent Testing Irregularities?



Active Monitoring
before, during, and after
test administration.

Paper-Based Test (PBT) Materials Storage



- Must be locked and secured by STC/DTC
- Daily accountability
- TAs sign out and check in materials before/after testing
- All security policies and test administration protocols are followed. Every TA should be given a TA Manual one week prior to test administration, and should read and understand all administration requirements.
- Reproduction of test materials is prohibited.

Computer-Based Test (CBT) Security

- Supervise students at all times.
 - No cell phones or other unapproved electronic devices.
 - Destroy used scratch paper at the end of the test.
 - No talking during testing.
- Prepare the room so that no student can view another student's computer screen.
- Do not share user names or passwords.
- Follow all security policies and test administration protocols.

If a Testing Irregularity Occurs...

1. TA immediately reports test irregularity to STC.
2. STC reports the irregularity to the Principal and DTC.
3. Notify PED by telephone/e-mail within **3** days.
4. DTC conducts an investigation to determine whether incident is impactful or non-impactful. Does a student test need to be invalidated?
5. Complete a [PED Test Irregularity Reporting Form](#).
6. Email the form within **10** days to ped.assessment@state.nm.us.

Corrective Measures

- **Student**: Student reprimands are handled at the local level.
- **TA**: TA reprimands may be handled at the local level. Depending on the severity, PED may refer the irregularity for investigation and possible action by the Licensure Bureau.

Note: Unintentional testing irregularities that affect the validity of the assessment may also be investigated by PED.

Irregularity Reporting Form

NM Public Education Department

Test Irregularity Reporting Form

2017-2018

When a testing irregularity occurs, the district must notify PED by email within 3 days. All sections of this form must be completed by district personnel and submitted to the PED Assessment Bureau by email to ped.assessment@state.nm.us within 10 days of the incident. Failure to do so may result in a reprimand. Use additional pages as necessary. All sections of this form, along with supporting documentation, must be typed.

School District Code:	School District Name:	Date of Incident:
Assessment:	<input type="checkbox"/> PARCC <input type="checkbox"/> SBA <input type="checkbox"/> NMAPA <input type="checkbox"/> ACCESS <input type="checkbox"/> EOC <input type="checkbox"/> ISTATON	
Name/Position of Person Reporting:		
Phone:	Email:	
SCHOOL AND STUDENT INFORMATION		
If the incident involved multiple students, provide a supplemental sheet identifying the test, grade level, and State Student Identification Number for each student. Do not include additional student identifiable information.		
School Code:	School Name:	Test Subject(s):
Grade(s):	SSID(s):	

<http://webnew.ped.state.nm.us/bureaus/assessment/district-test-coordinator/>

Irregularity Reporting Form

INCIDENT INFORMATION			
Description of Incident:			
School District Action:			
School District Recommendation:			
PERSONNEL INFORMATION			
Name/Position of Staff Involved in Incident		Were staff trained in test security? <input type="checkbox"/> YES <input type="checkbox"/> NO Date(s) of Training:	
Name/Email of District Test Coordinator			
Name/Email of School Test Coordinator:			
PED USE ONLY			
Report processed by:		Date:	
PED decision		Date of Notification to District:	

Missing Materials

- Loss of state test materials is a security breach.
- TA must report missing materials to STC.
- DTC must also notify the vendor's help desk and PED.
- Missing Test Materials Reporting Form:
<http://webnew.ped.state.nm.us/bureaus/assessment/district-test-coordinator/>
- For PARCC only, also complete the form at
<http://avocet.pearson.com/PARCC/Home#16221>



Questions?

Melissa Hernandez

505-827-6528

Melissa.Hernandez@state.nm.us



Thank you.

A grayscale photograph of several students sitting at a long table in a classroom, focused on writing in notebooks. The students are of various ethnicities and are wearing casual clothing. In the background, there are star-shaped decorations on the wall. The image is slightly blurred, giving it a candid feel.

PARCC

Partnership for Assessment of
Readiness for College and Careers

Agenda

- **Test design and ELA field testing**
- **Teacher and student resources**
- **Scoring and reporting**
- **Accessibility features and accommodations**
- **Technology specifications**
- **PearsonAccess^{next} (PAN) and TestNav**

What's New for Spring 2018

- PARCC transitioned to Unified English Braille (UEB) as of Fall 2017.
- Any schools using computer-based tests will automatically be shipped Test Coordinator and Test Administrator Manuals.
- Download/Install of TestNav app and Proctor Cache required.

PARCC Testing for Spring 2018-ELA

- All students in grades 3-11 must take an ELA assessment.
- Students in grades 3-8 take grade-level PARCC ELA tests.
- Students in grades 9-11 take grade-level PARCC ELA tests unless they are enrolled in a higher-level ELA course. In that case, they may take the PARCC ELA test corresponding to their course.

PARCC Testing for Spring 2018-ELA

- Students taking two PARCC-aligned ELA courses should only take the higher-level test. For example, a student taking English 9 and English 10 courses will only take the PARCC ELA 10 assessment.
- Students not currently enrolled in an ELA course must take the test that corresponds to their grade level.
- Eligible Spanish-speaking ELLs may take the Spanish reading SBA.

PARCC Testing for Spring 2018-ELA

Reduced
Testing
Time!



Each ELA unit
the same
length!

Flexibility with
scheduling!

PARCC Test Design ELA

Grade	Units	Unit Testing Time (Minutes)
Grade 3	1	75
	2	75
	3	75
Grades 4-11	1	90
	2	90
	3	90

For scheduling purposes, add 20-30 minutes to the unit time to account for reading instructions to students, answering questions, and logging in and out of TestNav.

PARCC Testing for Spring 2018-Math

- All students in grades 3-7 must take their grade-level PARCC math tests.
- Students in grade 8 take the Grade 8 Math PARCC test unless they are enrolled in a higher-level math course. In that case, they take the PARCC math test corresponding to their course.
- High school students only take a PARCC math test if they are enrolled in a PARCC-aligned math course, unless they need to meet graduation requirements.

PARCC Testing for Spring 2018-Math

- All high school students must attempt to pass PARCC math tests for graduation in at least two (2) administrations prior to implementing the Alternate Demonstration of Competency (ADC). Therefore, some high school students should take a PARCC math assessment for graduation even if they are not currently enrolled in a PARCC-aligned math course.
- Students taking two PARCC-aligned courses should only take the higher-level test. For example, a student taking Geometry and Algebra II courses will only take the PARCC Algebra II assessment.
- Eligible Spanish-speaking ELLs may take PARCC math assessments in Spanish.

PARCC Test Design Math

Grade	Units	Section	Unit Testing Time (Minutes)
Grades 3-5	1	Non-Calculator	60
	2	Non-Calculator	60
	3	Non-Calculator	60
	4	Non-Calculator	60
Grades 6 & 8	1	Non-Calculator	80
Grade 7	1	Non-Calculator	80
		Calculator	
Grades 6-8	2	Calculator	80
	3	Calculator	80

For scheduling purposes, add 20-30 minutes to the unit time to account for reading instructions to students, answering questions, and logging in and out of TestNav.

PARCC Test Design High School Math

Subject	Units	Section	Unit Testing Time (Minutes)
Algebra I, Geometry, Algebra II, Integrated Mathematics I, II, or III	1	Non-Calculator <hr/> Calculator	90
	2	Calculator	90
	3	Calculator	90

For scheduling purposes, add 20-30 minutes to the unit time to account for reading instructions to students, answering questions, and logging in and out of TestNav.

PARCC Test Exemptions

- Students eligible for NMAPA
- Students with an approved Medical Exemption

Field Testing

- In general, statewide assessments include newly developed field-test items that do not count toward scores.
- Field-test items are embedded throughout Math tests.
- ELA field-test items are all in one extra unit.
- Schools and districts participate in ELA field test once every three years.
- Schools and districts were notified in November if participating in Spring 2018.

PARCC Resources

Website	Content	Audience
http://parcc-assessment.org/	General PARCC Information, Instructional Tools, Videos and News	Test Coordinators – Teachers – Students – Parents
http://parcc.pearson.com/	Tutorials, manuals and training, test support, bulletins, technology setup	Test Coordinators – Teachers – Students- Parents
http://avocet.pearson.com/PARCC/Home	Test Administration Information, Test Manuals, Technology Information, Accessibility Features and Accommodations (AF&A) Manual	Test Coordinators – Teachers – Students – Parents – IT department

PARCC Resources

Website	Content	Audience
http://understandthescore.org/	Score report guide, Understanding the test, parent resources and information about the PARCC test.	Teachers – Students – Parents – Community Members
http://www.greatschools.org/gk/common-core-test-guide/?state=new-mexico	Worksheets, videos, parent suggestions for working with their child, gives strategies, and discusses disabilities.	Teachers –Parents – Community Members
http://newmexicocommoncore.org/	Information on the Common Core	Teachers – Students – Parents – Community Members

Performance Levels

Level 5	<i>Exceeded expectations</i>
Level 4	<i>Met expectations</i>
Level 3	<i>Approached expectations</i>
Level 2	<i>Partially met expectations</i>
Level 1	<i>Did not yet meet expectations</i>

- Proficiency = **Performance Level of 4 or 5**
- Cohort of 2018: students need **PLD Level of 3 or higher** for ELA and Math graduation requirement.

PARCC Reports and Data

- Individual Student Report (ISR)
- School Roster Report
- District Summary Report
- District and School Summative Files
- Evidence Statement Analysis Report
- Content Standards Roster Report
- Data Management Reporting System (DMRS)

Accessibility Features and Accommodations

- Download the 6th edition of the PARCC AF&A Manual at <https://parcc.pearson.com/manuals-training/>
 - Accessibility Features for all Students
 - Administrative Considerations
 - Accommodations for Students with Disabilities
 - Accommodations for English Learners

Accessibility Features for All Students

- Blank Scratch Paper – Must supply at least 1 sheet for each student. Additional pages may be provided as needed. Graph paper may be used.
- Bookmark – Allows students to flag items
- Highlight Tool – Highlighter color option will change depending on the color contrast option selected.
- Spell Check – Embedded spell check is an accessibility feature. Spelling is NOT assessed.

Accessibility Feature: Mathematics Text-To-Speech

- A Student's *Student Registration/Personal Needs Profile* (SR/PNP) must have Text-to-Speech selected to activate this feature. **Only assign if students have utilized this feature during 50% or more of classroom instruction.**
- The student will be assigned a form with embedded Text-to-Speech.
- Proctor Caching is required to prevent issues during testing.

Administrative Considerations

- Frequent Breaks
- Separate/Alternate Location
- Small Group Testing
- Specialized Equipment or Furniture
- Specified Area or Setting
- Time of Day

Accommodations Must...

- Enable students to participate with equal access.
- Be based on individual needs identified in the instructional/assessment setting.
- Be documented in either the IEP or 504 Plan.
- For English learners, be described and documented in the student's file.
- Be utilized during daily instruction.
- Parents receive notification.

Accommodation for Students with Disabilities: ELA/Literacy Assessments

- Text-to-Speech
- ASL Video
- Human Reader/Human Signer

Determining Eligibility for Text-to-Speech on ELA/Literacy Assessments

- Blindness or a visual impairment and has not yet learned Braille;
- A disability that *severely limits or prevents* him/her from accessing printed text, even after varied and repeated attempts to teach the student to do so;
- Deafness or a hearing impairment and is severely limited or prevented from decoding text due to a document history of early and prolonged language deprivation.*

*Source: [Appendix D of PARCC AA&F Manual](#)

Accommodation for Students with Disabilities: Calculators Allowed on NON-Calculator Sections

- Grades 3-7: Four function with square root and percentage functions.
- Grades 8: Scientific calculators (Student may also bring a scientific calculator or a four-function with square root and percentage functions).
- High School: Graphing calculators with functionalities consistent with TI-84 or similar models. (Student may also bring a scientific calculator or a four-function with square root and percentage functions).

Use Accommodations with Caution

- Calculators allowed on NON-Calculator Sections and ELA/L Text-To-Speech, ASL video, Human Reader/Human Signer must only be provided to students who meet eligibility criteria listed in the [PARCC AF&A Manual](#).
- PED will audit schools/districts based on high usage of these accommodations.
- See eligibility criteria for Calculator on non-calculator section on page 35.
- See ELA text to speech, ASL video, Human Reader/Signer eligibility criteria in [Appendix D](#).

Accommodations for English Language Learners

Content Area	Accommodations
Mathematics only	Spanish Translation of Math Test, Spanish Translation of Math Test in Text-to-Speech, Mathematics Responses
Both Content Areas	Translation of General Test Directions ¹ , Administration Directions Clarified in Student's Native Language, Word to Word Dictionary (English/Native Language)

¹PARCC provides General Test Administration directions in 10 languages, including Spanish and Navajo.

Technology Specifications

- Technology Coordinators must review [Technology Guidelines for PARCC Assessments: Version 7.0 \(July 2017\)](#) on parcc-assessment.org.
- The following are no longer supported:

Operating Systems	Internet Browsers
<ul style="list-style-type: none">• Chrome OS versions 50-56• iOS 9 and below• Android 5 and 6	<ul style="list-style-type: none">• Internet Explorer• Safari• Google Chrome

- If using browser-based TestNav, Firefox ESR 52 is required.
Use the desktop app instead!

Technology To-Do List

- Monitor PARCC technology bulletins at <http://parcc.pearson.com/bulletins/>
- Run the SystemCheck Tool on testing devices.
- Install new proctor cache software in each school.
- Install latest version of TestNav app.
- Configure TestNav in PAN.
- Conduct local infrastructure trials if any technology changes, previous challenges, or new staff.

TestNav - <http://download.testnav.com/>

- Installation of TestNav app version 8.10 on every testing device

Laptops and Desktops



Tablets



Chromebooks



- Use of app is required for all online testing situations except for thin client systems (e.g., Ncomputing)
- Schools with thin client labs have had better success with browser-based TestNav (*Firefox ESR Version 52* required)


PearsonAccess^{next} (PAN)

Live Site: <https://nm.pearsonaccessnext.com>






PARCC Training Site: <http://trng.pearsonaccessnext.com>

PearsonAccess Next

[Home](#) [Support](#)

**PARCC** Partnership for Assessment of
Readiness for College and Careers

★ Program Information



PARCC Assessment Program

Features

[Sign In](#)

Login

[Contact Us](#)

Call Center
1-888-493-9888
Monday - Friday
6:00 am - 8:00 pm (CST)

E-mail
PARCC@support.pearson.com

Live Chat
www.chat.pearsonaccess.com

[Related Links](#)

[Search PARCC Field Test FAQs](#)
[PARCC Field Test](#)
[Sample Sets and Tutorials](#)

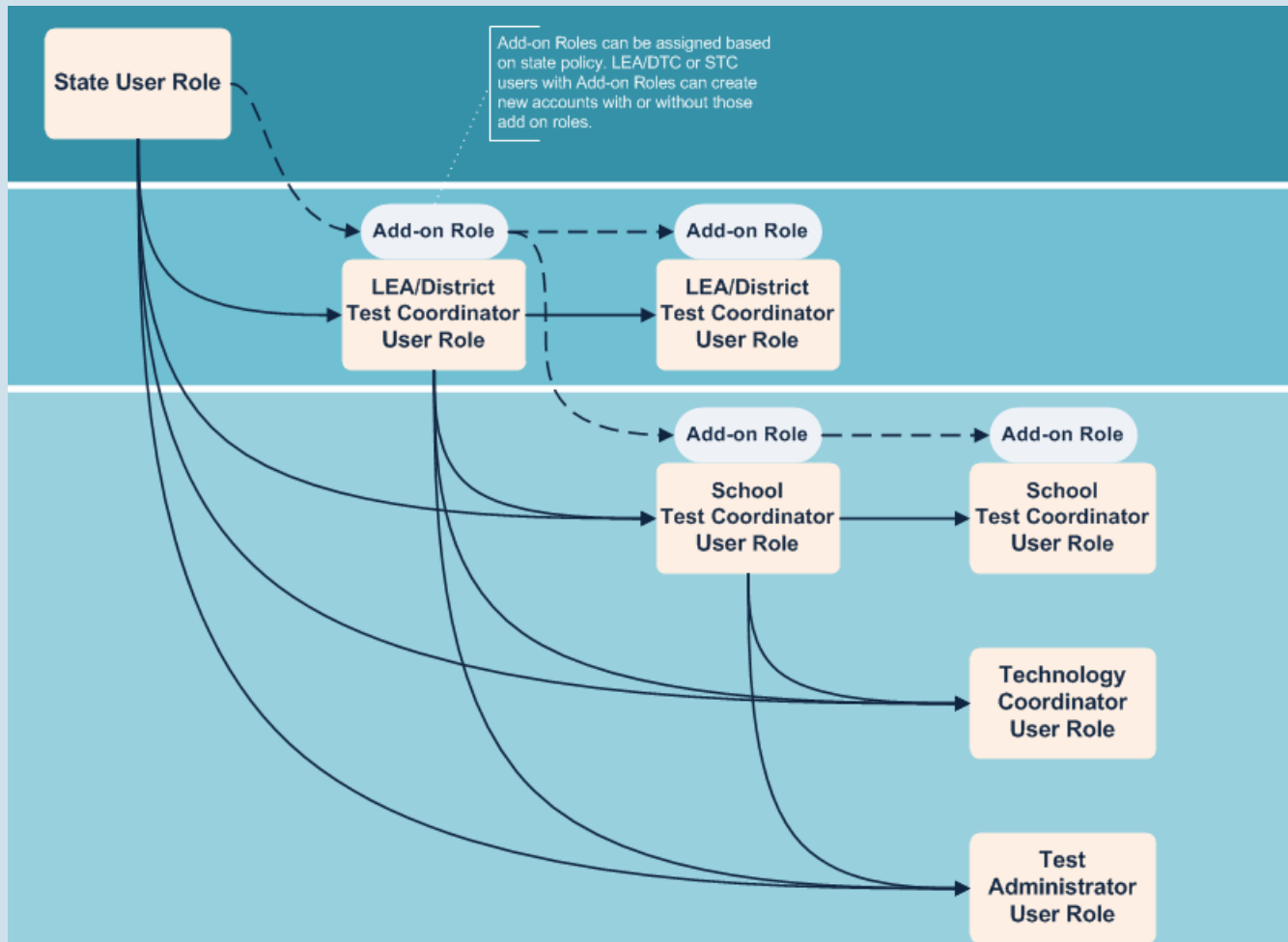
PearsonAccess^{next}

PED Responsibilities

Steps PED performs to prepare for PARCC assessments:

1. Imports *initial* Organization and Org Participation files.
2. Creates the *initial* User Accounts for PED-approved test coordinators.
3. Imports Student Registration/PNP File, using the 2017-2018 80-day STARS snapshot and accommodations from the Spring 2017 administration.

User Accounts in PearsonAccess^{next}



DTC Add-on Roles

- **Request Additional Order and Approve Additional Order Roles**—Allows user to place and approve additional orders.
- **Delete Student Role**—Allows user to delete students from PAN.
- **Sensitive Data Role**—Allows user who will be able to view and edit Student Sensitive Data.
- **Student Test Update Role**—Allows user to update student Not Tested Code/Reason and Void Score Code/Reason after testing.
- **Rejected Student Test**—Allows user to view resolve rejected paper tests.
- **Published Reports Role**—Allows user to access published reports.

Support for User Accounts

- View the USER ACCOUNTS TRAINING MODULE at <https://parcc.tms.pearson.com>.
- PARCC Customer Support agents:
 - Can reset passwords
 - Can unlock accounts for DTC Test Coordinator accounts
 - Cannot create accounts
 - Cannot lock/unlock accounts other than DTC accounts
 - Cannot update email addresses
 - Cannot delete/undelete accounts
- State users:
 - Can create new DTC Test Coordinator accounts
 - Can contact Melissa.Hernandez@state.nm.us if you are PED-approved DTC/STC and don't yet have a PAN user account

Student Registration/Personal Needs Profile

SR/PNP contains:

- student demographic data
- test-specific information
- assessment accommodations.

Review/edit:

- SR/PNP data
- PAN user interface
- file (spreadsheet) import.

PED Demonstration

1. Review students pre-registered by PED in the PAN user interface.
2. Change test assignment(s) or PNP information on Manage Student Test screen.
3. Switch student from one school to another (within district transfer).
4. Switch student from one district to another (between districts).

Test Session Management

- Test Coordinators (DTCs or STCs) must prepare sessions the day before testing.
- Test Administrator is responsible for unlocking test units.
- Test Administrator is responsible for locking each test unit BEFORE leaving the test room.
- NO TEST SESSIONS ARE TO BE LEFT UNLOCKED WHEN THE UNIT IS COMPLETE.

To-Do List

- February 5- March 2, 2018:
 - **Validate** all PED preregistrations in PAN.
 - Work with other schools/districts to transfer students who have moved since 80-day snapshot.
 - Add missing test registrations and accommodations, as necessary.
- March 5- April 6, 2018:
 - Finalize PNPs and validate form assignments to ensure correct accommodations and accessibility features.
 - Create online test sessions and proctor cache.
- March 28- May 11, 2018: Place Additional Order for any PBT test materials not included in SR/PNP.
- CBT Manuals and any PBT materials included in SR/PNP should arrive April 2, 2018.



Questions about
PARCC?

Melissa Hernandez

505-827-6528

Melissa.Hernandez@state.nm.us

A grayscale photograph of students in a computer lab, with a young man in the foreground looking at a monitor. The image is faded and serves as a background for the text.

End-of-Course Exams

"Assessments Created by
New Mexico's Teachers
for New Mexico's
Students"

Overview

- Purpose of EoCs
- Updates to New Mexico's Exam Platform for Informing Curriculum (EPIC)
- Data Submission for Paper-Based Testing
- Resources for EoCs
- Frequently asked questions

Purpose of EoCs: Theory of Action



New Mexico educators will **use EoC results to make curricular decisions** that improve achievement outcomes for students.

New Mexico EoC results are used to

- establish a measure of teacher effectiveness
- create common measures for course content
- determine if a student has met the requirements for graduation



EXAM PLATFORM *for* INFORMING CURRICULUM

What is EPIC?



Login

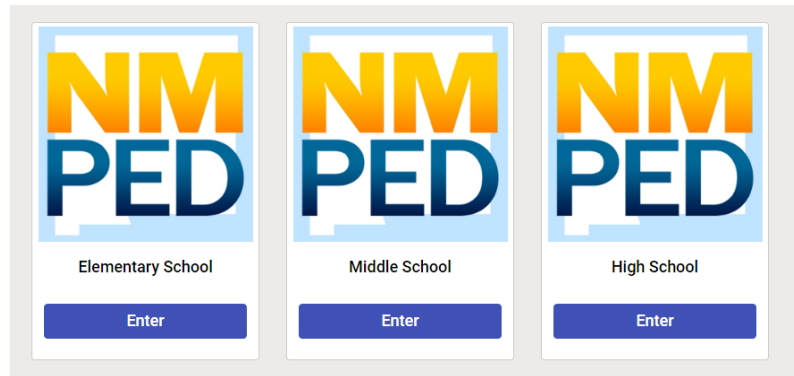
☐ Remember Me

Login

[Need Help?](#) [Practice Test](#)

1. Repository for Secured EoC Documents:
 - Paper test forms and keys
2. Testing Platform for students to take EoCs online:
 - DTCs/STCs to set up test sessions
 - Automated scoring
 - Reporting engine
3. Item Bank
 - Author test questions

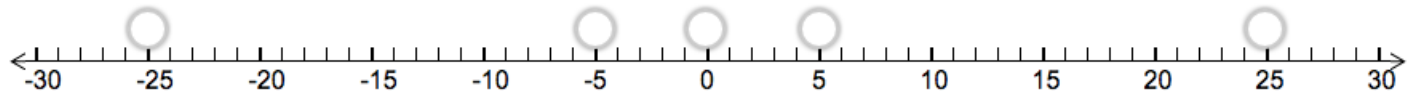
EPIC EoC Practice Test Available



Question 1

Given $4x^2 - 100 = 0$, what are the zeros of this equation?

Select all the zeros of this equation.



EPIC Usage Numbers 2016-17

- **368,000+** exams administered.
- **113,000+ students took exams.**
- **72** districts used EPIC; **488** schools used EPIC.
- **78** different exams given.

Testing

Paper-Based Testing	Digital Delivery-EPIC
Blueprints are available at http://webnew.ped.state.nm.us/bureaus/assessment/end-of-course-exams/eoc-blueprints-2017-18/ .	
<ul style="list-style-type: none"> DTCs have login access to EPIC to download paper test forms and scoring keys. 	<ul style="list-style-type: none"> DTCs /STCs can start setting up testing sessions.
Fall/Spring Testing Window: Last three weeks of the semester	
<ul style="list-style-type: none"> Scored locally 	<ul style="list-style-type: none"> Automated scoring; except for essay – blind scoring on EPIC
<ul style="list-style-type: none"> Use EoC Naming Conventions found on the EoC website to submit EoC data to PED. 	<ul style="list-style-type: none"> Teacher reports available immediately except for EoCs containing Essays. DTC reports available on EPIC
<ul style="list-style-type: none"> Submit data to STARS 	<ul style="list-style-type: none"> Raw data provided to PED

Testing Announcements

- Performance-Based items were removed from EoCs (exceptions: extended constructed response for HS Spanish and English Writing; HS Art form where student work is used to answer MC questions.)
- Several forms were reduced using item analysis results, while maintaining the balance of the original blueprint.
- An EoC Advisory Committee formed in June 2016 to improve development and delivery processes.
- EoC Blueprints were posted for public comment and suggestions were incorporated.
- PED worked to develop new blueprints for the 2017-18 school year.
- PED worked to develop new forms for the 2017-18 school year.

Frequently Asked Questions

- How can schools get access to last year's EOCs? Students on career path need to retake, per IEP, to achieve individualized cut score (which cannot occur with the current version due to a new cut score).
- Students who take P.E. in elementary and middle school only have one EOC. Do they have to take it every year? If not, what data is used for that teacher's evaluation?
- The ADC graduation manual refers to the number of "retests" a student is allowed on an EOC. Does this include the initial time the students test?
- Can past versions of EOCs use the current cut scores provided by PED?
- Is there a way to get a pass/fail report for EOCs considering that the passing scores vary by version?
- Is text to speech available for EOCs through EPIC?
- Will the EOCs be translated into Spanish?

Useful EoC Resources

- EoC Website at NMPED: <http://webnew.ped.state.nm.us/bureaus/assessment/end-of-course-exams/>
- DTC Secured Log-in to EPIC: <https://www.nmepic.com/ACE/Index>
- EOC Practice Test on EPIC: <https://www.nmepic.com/ACE/GuestUser>
- EOC Course Linkage Chart:
<http://webnew.ped.state.nm.us/bureaus/assessment/end-of-course-exams/resources/>
- EOC Frequently Asked Questions: <http://webnew.ped.state.nm.us/wp-content/uploads/2018/01/2016-17-FAQ-Document-for-End-of-Course-Exams.pdf>

Questions?

Mark Curran
Education Administrator
mark.curran@state.nm.us
(505) 827-6651

Candace Green
Education Administrator
candace.green@state.nm.us
(505) 827-4644

Adam Rios
EoC Project Associate
adam.rios@state.nm.us
(956) 206-6727

Thank You!

